



EVOKING TRUST



Affordable Series
IP-10 Camera Series



STARVIS 2MP Compact IR Bullet IP Camera

IP-10203LBO



About the Camera : IP 10 Series cameras are affordable latest camera series by Wavesys. It is built on advanced system-on-chip technology ,NDAA Compliant ,Sony Starvis Sensors. The IP 10 series cameras are integrated with Wavesys Open Platform Enterprise Level Video Management Software WVMS. Wavesys is a video-based business intelligence leader with deep knowledge of different applications of intelligent video across distinct verticals.

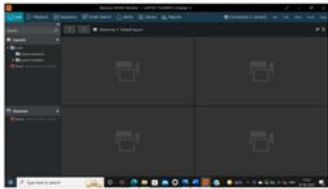
Key Features

- . Full HD 2MP @30FPS
- . True Day/Night
- . True WDR
- . Power over Ethernet (IEEE 802.3af)
- . H.265, H.264 and MJPEG compression
- . 2.7 ~13.5 mm lens
- . IP67 Environmental Housing
- . CE, FCC, BIS & RoHS Certification

Application



Key features of WVMS



WVMS Professional – Monitoring Console



WVMS Enterprise – Wall & Redundancy



WVMS Facial Recognition Module



WVMS Video Content Analytics



WVMS License Plate Recognition



WVMS Mobile Application

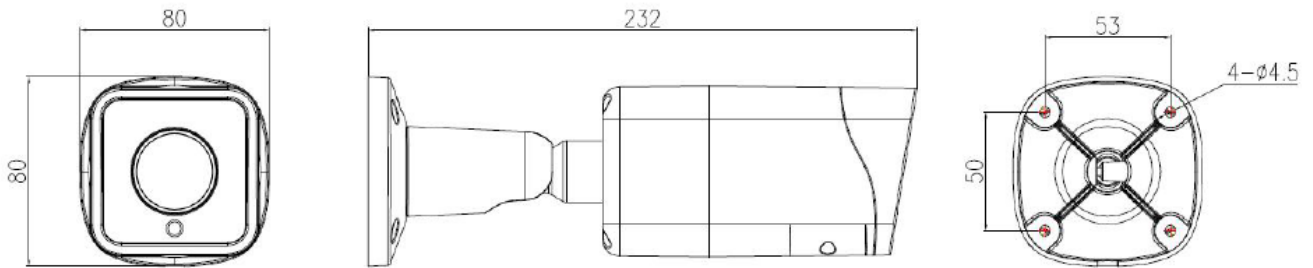
Specification

CAMERA	
Model	IP-10203LBO
Image Sensor	1/2.8" Progressive Scan CMOS
Effective Pixels	1920(H) x 1080(V)
Scanning System	Progressive scanning
AGC Control	Auto
IRIS Type	Auto
Minimum Illumination	Color: 0.03 Lux @ (F1.6, AGC ON) , B/W: 0 Lux with IR
Lens	2.7~12 mm mm, F1.6
Angle of View	H: 101° to 29.3°, V: 54.0° to 12.6°
Shutter Time	Auto/Manual, 1/5 to 1/20,000s
Day & Night	True Day & Night (Removable IR-cut filter)
Wide Dynamic Range	True WDR ,120dB
S/N Ratio	50 dB
IR ILLUMINATOR	
Smart IR	Advanced Smart IR
IR Working Distance	upto 40 m,depend upon object size
VIDEO	
Video Compression	H.265, H.264, MJPEG
Region of Interest (ROI)	Off/On (8 Zone, Rectangle)
Multiple Profile Streaming Performance	Stream1: 1920x1080, 1280x720 @25/30fps Stream2: D1, VGA, CIF @ 25/30fps Stream3: VGA, CIF, QVGA @ 25/30fps
Max Resolution	1920x1080
Video Bit Rate	100Kbps ~ 10Mbps Multi-rate for Preview and Recording
Bitrate Control	Multi Streaming CBR/VBR (Controllable frame rate and Bandwidth)
Digital Noise Reduction	3D-DNR
Privacy Mask	Support
Other Image Processing	Configurable Exposure, White Balance, Sharpness
Image Orientation	Flip / Mirror / Corridor Mode

AUDIO	
Audio Compression	G.711, RAW_PCM
Audio input / output	1 / 1
EVENT	
Event Trigger	Motion Alarm, Temperature critical, DI
Pre-Post Recording	Pre: 1~5 sec Post: 1~240 sec
Event Notification	FTP, E-mail, Alarm-out, SD card
NETWORK	
Ethernet Standard	10 / 100 / 1000Base-T
IP	IPv4
Protocol	IPv4/IPv6, HTTP, HTTPS, TCP/UDP, RTSP/RTCP/RTP, DHCP, DNS, DDNS, PPPoE, SMTP, 802.1x, UPnP, FTP, NTP, ARP, SNMP, TLS/SSL
Max. User Access	10 Users
Plug In	ONVIF Profile S, CGI API
GENERAL	
Material	Aluminum Die-casting, White
External I/O Terminals	1 / 1
Language on webpage	English
Power Source	DC12V, PoE(IEEE 802.3af)
Power Consumption	DC12V ,3W (IR OFF), Max 5W (IR ON)
Operating Conditions	Humidity 10 ~ 90% RH (non-condensing) [DC12V / PoE] -30°C ~ 60°C(-22°F to 140°F)
Dimensions	232 × 80 × 80mm
Weight	0.78 kg
Approvals	FCC, CE, RoHS,BIS,IP67
EDGE STORAGE	
Storage	1x microSD / microSDHC / microSDXC (card not included),support up to 256GB



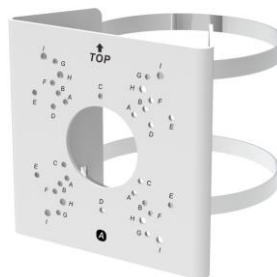
Dimensions



ACCESSORIES



WSN-CBK656A
Junction Box



WSN-CBK627D
Pole Mount