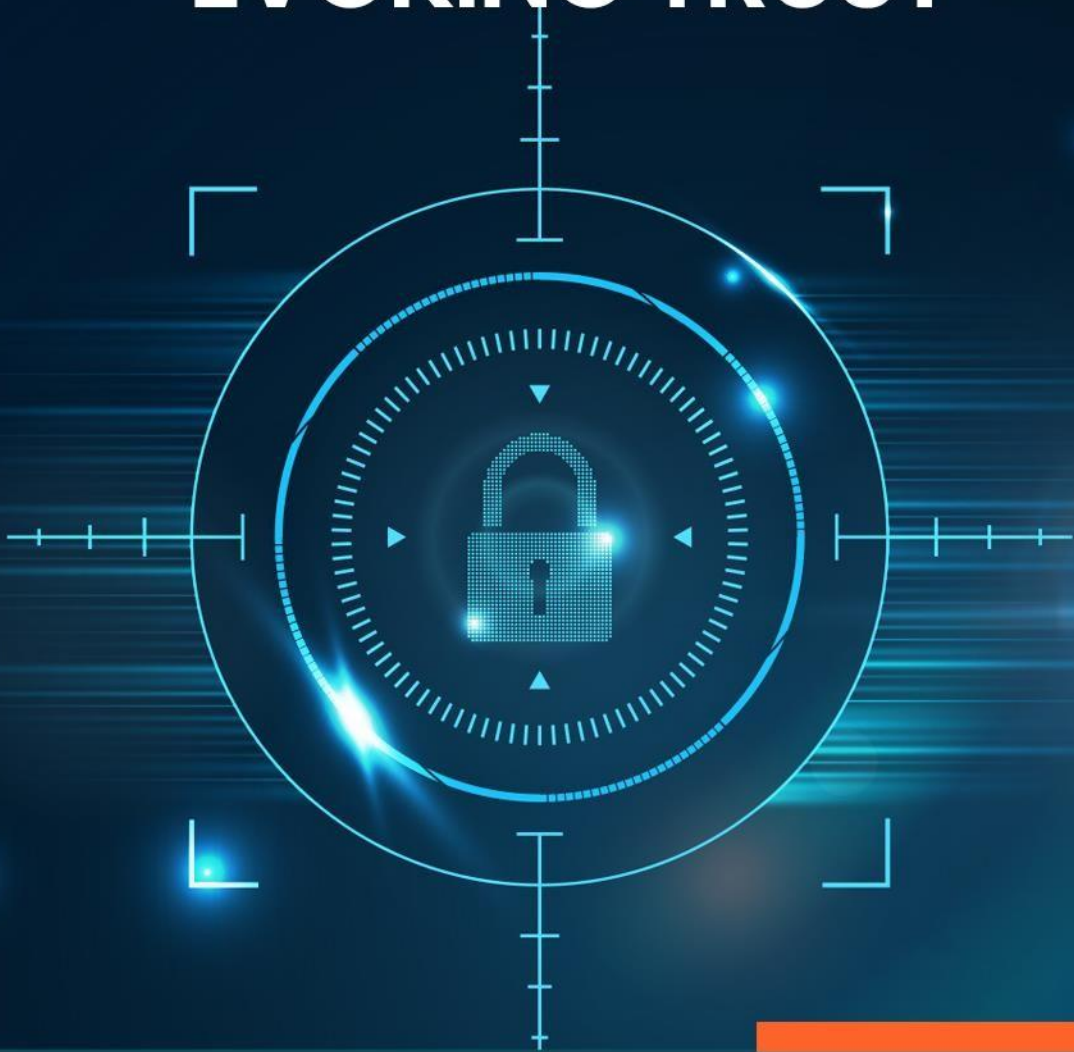




**EVOKING TRUST**



**Affordable Series  
IP-10 Camera Series**

# 8MP Compact Box IP Camera

## IP-10503BOX



**About the Camera :** IP 10 Series cameras are affordable latest camera series by Wavesys. It is built on advanced system-on-chip technology from California based company Ambarella and Sony Starvis Sensors. The IP 10 series cameras are integrated with Wavesys Open Platform Enterprise Level Video Management Software WVMS. Wavesys is a video-based business intelligence leader with deep knowledge of different applications of intelligent video across distinct verticals.

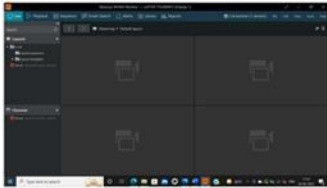
## Key Features

- . Full HD 8MP @30FPS
- . True Day/Night &WDR
- . Smart Compression Technology based on bit rate Control, ROI
- . Power over Ethernet (IEEE 802.3af)
- . H.265, H.264 and MJPEG compression
- . Supports P-Iris
- . IP67 Environmental Housing
- . CE, FCC, BIS & RoHS Certification

## Application



### Key features of WVMS



WVMS Professional – Monitoring Console



WVMS Enterprise – Wall & Redundancy



WVMS Facial Recognition Module



WVMS Video Content Analytics



WVMS License Plate Recognition

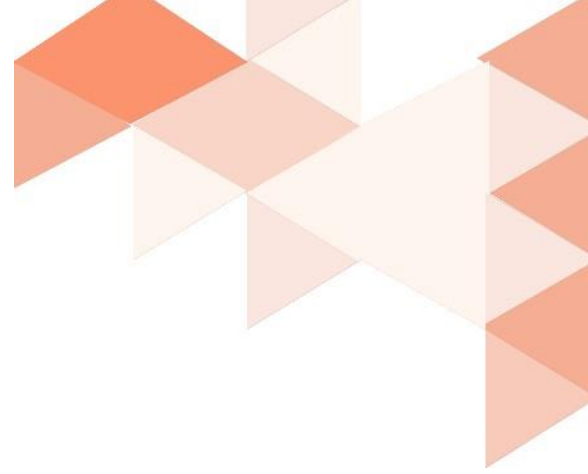


WVMS Mobile Application

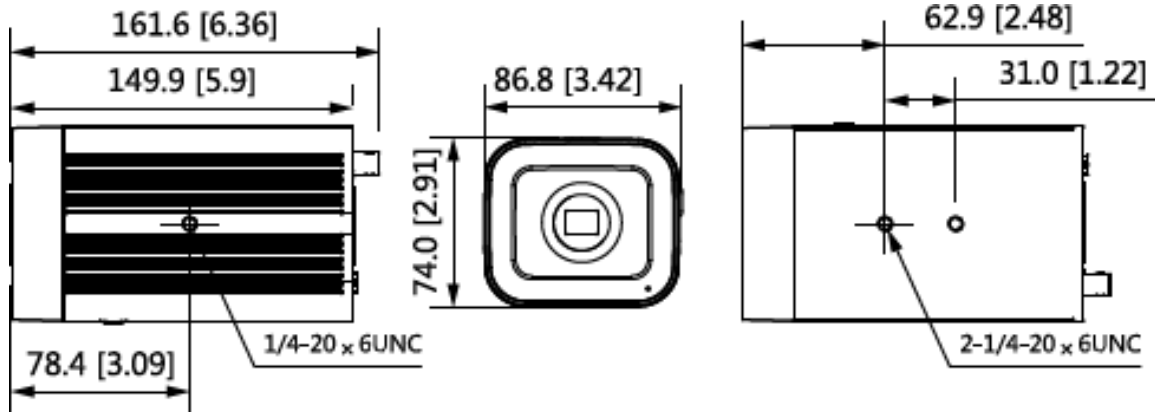
### Specification

CAMERA	
Model	IP-10503BOX
Image Sensor	1/1.8" CMOS Image Sensor
Effective Pixels	3840 (H) × 2160 (V)
Scanning System	Progressive scanning
AGC Control	Auto
IRIS Type	Auto
Minimum Illumination	0.005 Lux@F1.5 (Color, 30 IRE) 0.0005 Lux@F1.5 (B/W, 30 IRE)
Region of Interest (RoI)	Yes (4 areas)
Angle of View	Horizontal: Approx 94°, Vertical: Approx 50°
Shutter Time	Auto/Manual 1/3 s–1/100,000 s, Anti-Flicker, Slow Shutter (1/3, 1/5, 1/6, 1/7.5, 1/10)
Day & Night	Auto (ICR)/Color/B/W
Wide Dynamic Range	120 dB
Scene Self-adaptation	Yes
S/N Ratio	50 dB
Lens	
Lens Mount	C/CS
Lens	10.5mm-42 mm, F1.5, detachable
VIDEO	
Video Compression	H.265, H.264, MJPEG
Smart Codec	Smart H.265+, Smart H.264+
Multiple Profile Streaming Performance	Main Stream: 3840 × 2160 (1–25/30 fps) Sub stream: 704 × 576 (1–25fps); 704 × 480 (1–30fps) Third stream: 1920 × 1080 (1–25/30 fps)
Max Resolution	3840 × 2160
Video Bit Rate	H.264: 8 kbps–16384 kbps H.265: 3 kbps–14050 kbps
Bitrate Control	Multi Streaming CBR/VBR (Controllable frame rate and Bandwidth)
Digital Noise Reduction	3D-DNR
Privacy Mask	4 programmable zones
Image Rotation	0°/90°/180°/270° (Support 90°/270° with 2688×1520 resolution and lower)
Other Image Processing	Configurable Exposure, White Balance, Sharpness
Image Orientation	Flip / Mirror / Corridor Mode
Defog	Yes

AUDIO	
Audio Compression	PCM; G.711A; G.711Mu; G.726; G.723
Audio input / output	2 channels (RCA port)/1 channel (RCA port)
EVENT	
Event Trigger	No SD card; SD card full; SD card error; SD card durability warning; network disconnection; IP conflict; illegal access; security exception;
Pre-Post Recording	Pre: 1~5 sec Post: 1~240 sec
Event Notification	Alarm-out
NETWORK	
Ethernet Standard	10 / 100 / 1000Base-T
IP	IPv4
Protocol	IPv4; IPv6; HTTP; TCP; UDP; ARP; RTP; RTSP; RTCP; RTMP; SMTP; FTP; SFTP; DHCP; DNS; DDNS; QoS; UPnP; NTP; Multicast; ICMP; IGMP; NFS; SAMBA; PPPoE; SNMP
Security	HTTPS (SSL), IP filtering, 802.1x, Digest Authentication
Plug In	ONVIF Profile S/G/T, CGI P2P
GENERAL	
Material	Aluminum Die-casting, White
External I/O Terminals	2/2
Language on webpage	English
Power Source	DC12V, PoE (IEEE 802.3af)
Power Consumption	DC12V Max 7.55W, PoE Max 7.76W
Operating Conditions	Humidity 10 ~ 90% RH (non-condensing) [DC12V / PoE] -30°C ~ 60°C (-22°F ~ 140°F)
Approvals	FCC, CE, BIS, IP67
Weigh	0.85 kg
Dimensions (D x H)	Ø161.6 mm × 86.8 mm × 74.0 mm
EDGE STORAGE	
Storage	Micro SD card (support max. 256 GB);



## Dimensions



## ACCESSORIES



PFB110W  
Wall/Ceiling/Plane  
Mount Bracket



PFB121W  
Wall Mount Bracket



DH-PFL1040-A12PE  
10-40 mm



PFH610V Series  
Housings



PFM320D  
12 VDC 2A Power Adapter



PFM900-E  
Integrated Mount Tester