



Control Room Video Wall



Control Room Video Wall

So, here comes your huge CCTV installation. With a control center and a lot of displays in there. And you strive for a natural and ingenious management tool; for, without it, controlling the video wall may turn into a nightmare. Wavesys WVMS software suite offers an easy-to-use video wall solution, which takes minutes to set up and seconds to learn to drive it.

In this article, we focus on the Wavesys WVMS, Wavesys video wall capabilities and see how it can be applied in any control center, operators' room, or dispatcher office.



Flexibility Above All

Video walls in Wavesys WVMS can be thought of as virtual entities. Apart from matching the video wall layout to the actual display arrangement, a single video wall can unite physical displays from different workstations across the world. This enables you to manipulate the contents of many no-matter-how-remote displays from a comfy lounge chair in your garden in no time at all. Monitors connected to the same computer may belong to different video walls, if required, for example, for sharing video wall administration permissions between different people.

Video walls are created via software configuration UI — WVMS Console — and then managed via client — WVMS Monitor application. WVMS advanced user management enables you to grant separate permissions for administering (creating, editing) and controlling (setting contents) video walls and video wall groups.

Contents of the video walls can be:

- pre-defined as static layouts,
- shared immediately from any WVMS Monitor connected to the same Wavesys WVMS server,

- assigned by the video wall supervisor,
- set to appear automatically based on motion, VCA or any other external event (not covered in this article so come back and check future topics!).

To assign the contents of the video walls, you just need to be connected to the same Wavesys WVMS server — no matter where you are. You do not need any physical control over the video wall machines. Nor do you need to be a part of the same video wall: from your workplace, you are in control of all video walls in the Wavesys WVMS system. (Naturally, you would need corresponding permissions). We do not imply any license limitations on the number of your video walls in the software - create as many as you need for no extra fee!

3, 2, 1, and Off You Go

WVMS operates through Windows API and uses it to its advantage: the software works with the system display arrangement, allowing you to create new application windows with a single click. Once you have installed the WVMS Monitor software and configured video walls, all the management is done on the software level, relieving you from the necessity to use mice and keyboards every time a change in the layout is required.



If you wish to combine several physical displays into a single one, you can set it up using a third-party driver. Simply configure it so that the array of monitors appears as a single display in Windows Control Panel: once it does, WVMS Monitor will also be able to work with the "big screen" as if it were a single display.

So, how do you employ WVMS enterprise video walls? A few simple steps and you are all set:

1. In WVMS Console, create a video wall with your desired display layout
2. Install WVMS Monitor on each workstation that is a part of the future video wall
3. Run WVMS Monitor and open secondary application windows on all necessary displays
4. Assign WVMS Monitor windows to the video wall displays
5. Grant permissions for your video wall supervisor
6. Let him sit back, relax, and administer the video wall from anywhere

Within each workstation, you can dedicate some displays to a video wall while leaving others to be local only, or assign these displays to several different video walls. The display layout may conform to the actual (physical) display pattern. Another approach, as mentioned earlier, is to create a virtual video wall that will include displays from different locations.

Though, at this point, let us consider a case where the video wall is aligned with the physical display sequence — a perfect case study for a control room.

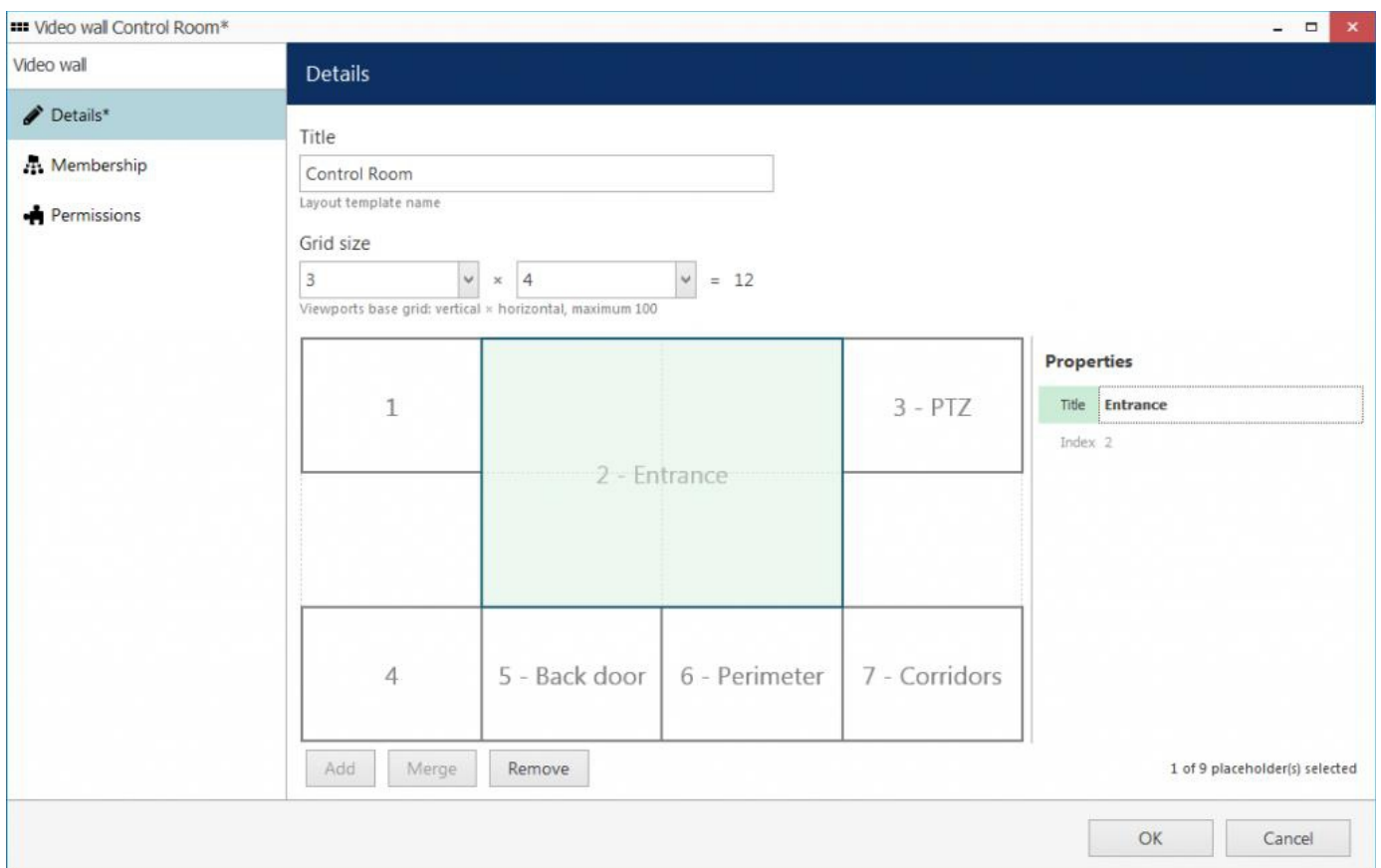
Build the Wall

To create a video wall, simply open your WVMS Console and go to the Video walls section under Configuration. You will need an administrative account for this, or at least a permission to manage video walls enabled in your user's Administration profile (which also automatically lets you log into WVMS Console).

On the top panel, click the + New video wall button: a dialog box will appear, allowing you to create the desired display

arrangement. Each cell within the layout is a single physical screen, as it appears in the Windows Control Panel. First, select the grid size — the maximum number of displays vertically and horizontally. Up to 20 per row/column and up to 100 displays in total!

Then, use the Merge and Remove buttons to fit the monitor size and remove missing or non-existent displays. Apart from the index number, each display can be optionally assigned a name - based on the camera type, location, or other project-specific attributes. Both display numbers and names will appear in the WVMS Monitor application. Thus, you identify where a specific display belongs to with just one glance.



Create your desired layout with the video wall constructor

After you finish and hit OK to apply the configuration, it will be immediately saved into the database. All connected WVMS Monitor applications, as well as the central server mirror, will be notified that the video wall functionality is now available. But do not close the dialog box yet; let's see how you can restrict access to the video wall management.

Control 'Em All

Using the same administrative account for client access would be a security breach. So, first of all, set up user access to the video wall in the WVMS Monitor application: choose, who will supervise the video wall and manage its contents. And then, teach your staff these several steps for the video wall management!

ACCESS CONTROL

While still in Console with your video wall opened for editing, go to the Membership tab. Here, you can choose if the video wall will belong to a video wall group. Grouping facilitates permission handling, and we suggest that you do use groups if you are dealing with a great number of users. Further, the Permissions tab lets you grant the user access to the video wall or video wall group, for that matter.

There are two permissions: to view and to manage the video wall.

- The permission to view lets users connect to the video wall via WVMS Monitor and retrieve its contents; also, this allows them to assign application windows to video wall displays.
- Users authorized to manage the video wall will have full control over it in the Video Wall tab in WVMS Monitor, plus the ability to log in via Console and change the video wall layout.

So, the first permission is required for the user to see the video wall contents — if the permission is missing, displays belonging to the video wall will appear blank. The second one is necessary for supervisors, enabling them to manage the video wall structure and filling.

Now that the video wall layout is ready and access to it is secured, let's see how it can be supplied with contents.





VIDEO WALL IN WVMS MONITOR

Visualization is always far more interesting than pure configuration, so here comes the exciting part :)

Open your WVMS Monitor application and connect to the Wavesys server. In the Live mode, click the Multidisplay setup button in the upper right corner of the application window (right beneath the main menu) and then open advanced settings.

Advanced window settings

+ Add window 1 selected

WINDOW NAME	DISPLAY	IS PRIMARY	STARTUP LAYOUT	IS POP-UP	LAYOUT POP-UP	FULLSCREEN	VIDEO WALL SCREEN
WVMS Monitor	1	Yes		Yes			
Upper Right	2			Yes			3. PTZ

Window name: Upper Right

Startup display: [1] [2]

Set startup layout: (Default)

Allow channel and map pop-ups Allow layout pop-ups

Start full screen
Choose this option to launch this window in full screen mode instead of maximized

Video wall monitor
Make this display a part of a video wall configuration

Available video walls: Local Server ▶ Control Room

Video Wall Layout: [1] [2. Entrance] [3. PTZ]
[4] [5. Back door] [6. Perimeter] [7. Corridors]

Save Cancel

Assign application windows to video wall displays

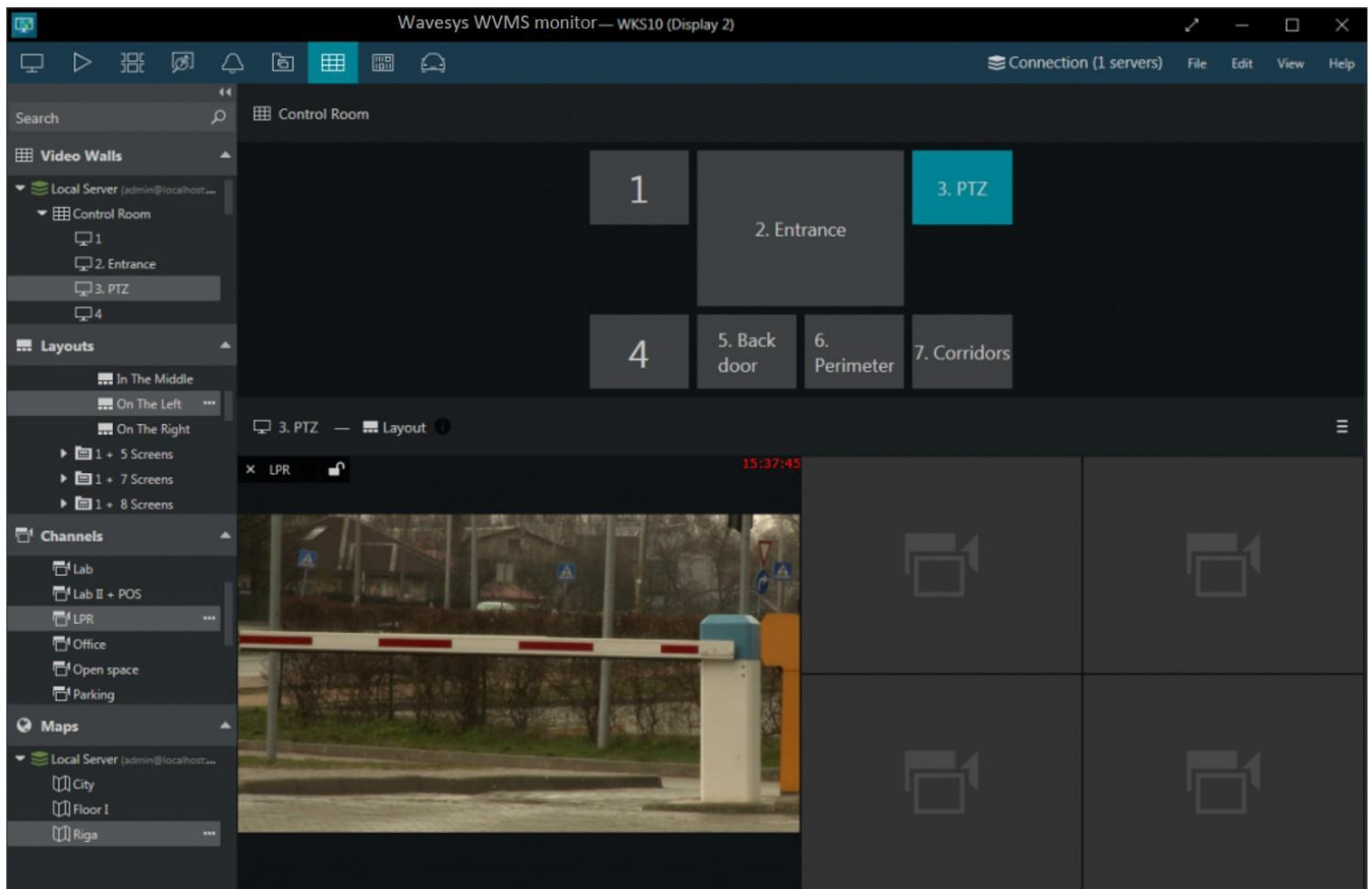


You will see the layout of **local displays** here: for each one, you can create a **new application window** and make it a **part of the video wall**. This is also the place where you **define startup** layouts for each window: it will be loaded automatically once the WVMS Monitor application is launched.

Now every WVMS Monitor window "knows" it is a member of the video wall: this information appears in the application title bar.

Once the preliminary setup is finished, there are three ways how to **set the contents of the video wall** from the WVMS Monitor interface:

- from the **resources list** on the left, click the Advanced button next to the **channel, map, layout or layout sequence** name and choose the target video wall display: the item will pop up immediately on the first empty viewport (maps, channels) or replace the current contents of the target display (layouts and sequences),



WVMS Monitor provides full control over your video walls



- similarly, use the Screen contents button in the upper right corner of any WVMS Monitor window to share its **current state** with any video wall display (without having to save the layout),
- finally, switch to the Video Wall tab to have **full control over all video walls**.

SUPERVISING YOUR VIDEO WALL

Let's switch to the Video Wall tab. Controls here are intuitive:

- **drag and drop** the desired **video wall** onto the upper section: video wall layout preview will appear there,
- **pick a screen** by clicking on it: current display contents will appear in the lower section,
- fill the target display contents: **drag and drop resources** from the list on the left.

You can either select empty layout templates and then populate them with channels and maps, or pre-define layouts and then use them for video wall displays. Layouts can be either local or shared via Wavesys server.

- There are several small but important things that will facilitate the process:
- alike in regular live view, each viewport has a **lock overlay control**: use it if you wish to prevent certain viewport content to be replaced by other channels and maps popping up,
- use the Screen contents button in the upper right corner of the preview area to set the current display layout as the **startup layout**,
- if someone else is managing the same display at the same time, an information **sign** will appear next to the channel/map name: hover your mouse cursor over it to learn who placed this contents.

Some other overlay controls, such as PTZ and digital PTZ, are also available in the live preview for your convenience.

Every change you make here is immediately reflected: there is no need to save or apply.



City Council or Shopping Mall

The setup process described above is equally suitable for any type of the control room video wall. Be it a hospital, a shopping center, a city surveillance, or an airport security control center, we will ensure that you have the best experience with the Wavesys WVMS video wall solution.

To finish with, here is a real-life video wall example from the control room. Easy to configure, convenient to use. Feel ready to try yourself?



Follow us on

