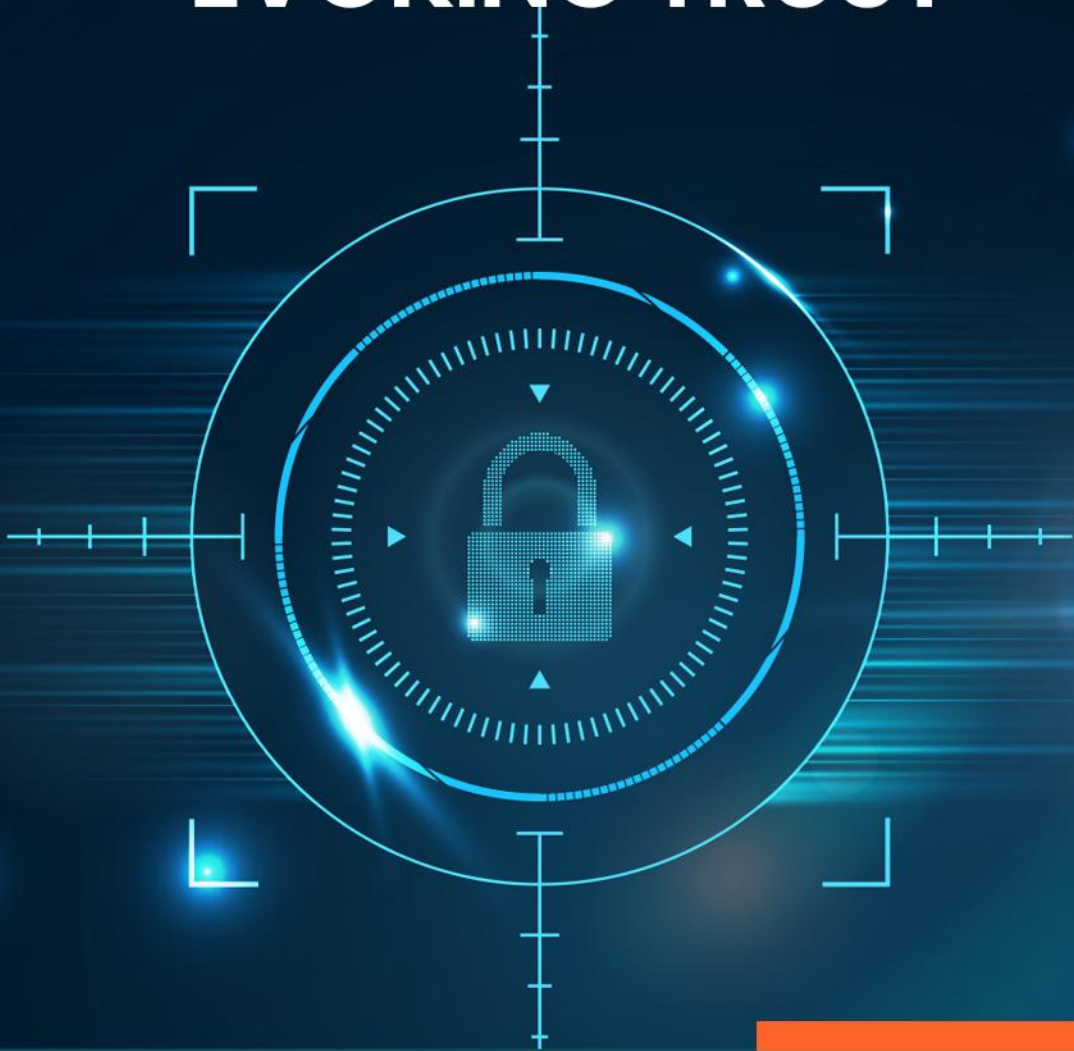




EVOKING TRUST



Affordable Series

IP-01 Series Embedded NVR



64 Channel NVR

IP-01R-MNVR4B2U-64CH



About the NVR : IP 01 Series NVR are affordable latest NVR series by Wavesys. It is built on advanced system-on-chip technology ,NDAA Compliant. Wavesys is a video-based business intelligence leader with deep knowledge of different applications of intelligent video across distinct verticals.

Key Features

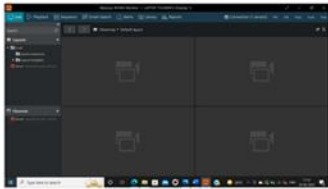
- Up to 64-ch IP cameras access
- Up to 400 Mbps incoming/outgoing bandwidth
- Up to 1-ch @ 12MP/4-ch @ 8MP/8-ch @ 4MP/16-ch @ 1080P/32-ch @ D1/64-ch @ D1 decoding capacity)
- Support 2 HDMI and 1 VGA interface
- Support fisheye Dewarping and VCA alarm linkage
- Up to 4-ch perimeter protection
- USB Device, Network based Backup mode
- Support RAID 0/1/5/6/10 and N+1 hot spare

Smart Search

Using Wavesys Smart Search technology, the NVR is able to detect people activities using image functions such as Picture grid, Time search, and Event and retrieve the relevant video.



Key features of WVMS



WVMS Professional – Monitoring Console



WVMS Enterprise – Wall & Redundancy



WVMS Facial Recognition Module



WVMS Video Content Analytics



WVMS License Plate Recognition



WVMS Mobile Application

Specification

Video Input

Model Number IP-01R-MNVR4B2U-64CH

IP Camera Input 64 Channel

Incoming Bandwidth 400 Mbps

Outgoing Bandwidth 400

Video Output

HDMI 1 Output 3840 × 2160, 1920 × 1080, 1280 × 1024, 1024 × 768

HDMI 2 Output 1920 × 1080, 1280 × 1024, 1024 × 768

VGA Output 1920 × 1080, 1280 × 1024, 1024 × 768

Different Source Output Support

Decoding Capacity 1ch 12MP, 4ch 8MP, 8ch 4MP, 16ch 1080P, 32ch D1, 64ch D1

Dual Stream Support

Multi-screen Display
1st Screen: 1/4/8/9/16/32/36/64
2nd Screen: 1/4/8/9/16

Recording

Resolution 12MP, 8MP, 6MP, 5MP, 4MP, 3MP, 1080P, 720P, D1 etc.

Recording Mode Manual, Schedule (Regular, Continuous), Event

Trigger Events Motion Detection, Video Loss, Alarm in, IVS



AI Recognition	
Face Comparison	Real-time captured and display faces comparison results (registrant (name and ID), stranger, channel, similarity)
Multi-objective	Real-time captured and display vehicle, human body, non-motor vehicle, license plates image, and facescomparison results (registrant, stranger, channel, similarity)
Smart Search	Time, Properties, Pictures
Trigger Events	Buzzer, Alarm push, Alarm prompt, Email, Alarm Out, Compare the result simultaneously, etc.
Playback and Backup	
Sync Playback	16/9/4/1
Search Mode	Time /Date, Alarm, Picture grid, Event
Backup Mode	USB Device, Network
Alarm	
General Alarm	Motion Detection, Video Loss, IVS, Alarm in, Alarm out
Intelligent Analysis (By Camera)	Smoking Detection, Smoke and Fire Detection, Fire Spot Detection, Intrusion, Single Line Crossing, Double Line Crossing, Loitering, Wrong-way, Illegal Parking, People Counting, Smart motion detection, Enter Area, Leave Area, etc.
Abnormal Alarm	Disk Alarm, IP Address Conflict, Network Disconnect
Intrusion Detection (By NVR)	4-ch, support the accurate detection of human and vehicle
Network	
Network Function	HTTP, HTTPS, TCP/IP, IPv4, UPnP, UDP, RTSP, SMTP, NTP, DNS, DHCP, P2P, IP Filter, DDNS, 802.1X, SNMP, 3G/4G, PPPoE
Remote Users	8 users
P2P	Support
Interoperability	ONVIF, SDK, CGI
Storage	
ANR	Support
Disk Group	Support
RAID	RAID 0, RAID 1, RAID 5, RAID 6, RAID 10



Interface

HDD Interface	4 SATA interfaces, up to 16TB capacity for each disk
Network Interface	2 × RJ-45, 10/100/1000 Mbps self-adaptive Ethernet port
eSATA	1 eSATA Interface
HDMI	2
VGA	1
Alarm In/Out	1/1
Alarm In/Out	16/6
USB Interface	Front panel: 2 × USB 2.0, Rear panel: 2 × USB 3.0
RS-485 Interface	1
RS-232 Interface	1
Reset Button	On-board reset button

General

Power Supply	100 to 240VAC
Power Consumption	< 15 W (without HDD)
Operating Conditions	-10 °C to 50 °C (14 °F to 122 °F)
Storage Conditions	Less than 90% RH
Certifications	CE/FCC. BIS
Dimensions	440 × 368.8 × 70 mm (17.32 × 14.52 × 2.76 inch)
Net Weight	4.65 kg (10.25 lb) without HDD

Dimensions

