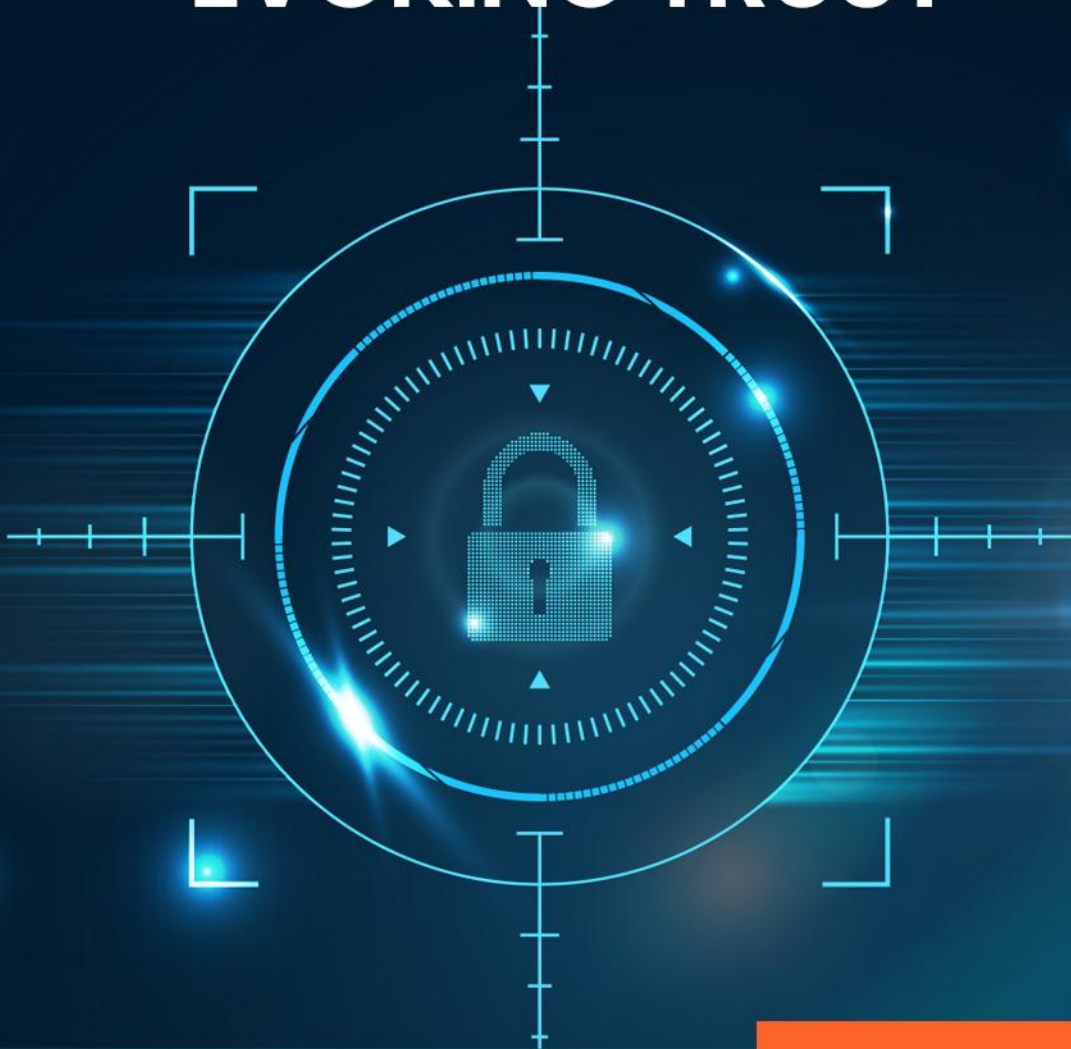




EVOKING TRUST



Affordable Series

IP-01 Series Embedded NVR



32 Channel NVR

IP-01R-MNVR2B1U-32CH



About the NVR : IP 01 Series NVR are affordable latest NVR series by Wavesys. It is built on advanced system-on-chip technology ,NDAA Compliant. Wavesys is a video-based business intelligence leader with deep knowledge of different applications of intelligent video across distinct verticals.

Key Features

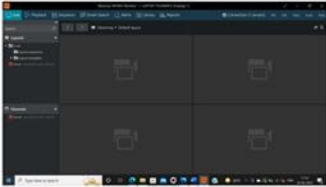
- Up to 32-ch IP cameras access
- Up to 160 Mbps incoming/80 Mbps outgoing bandwidth
- Up to 1ch 12MP, 4ch 4MP, 8ch 1080P, 16ch D1
- Support 1 HDMI and 1 VGA interface
- Support fisheye Dewarping and VCA alarm linkage
- 16ch POE ports
- USB Device, Network based Backup mode
- 2 SATA HDDs, up to 8TB for each HDD

Smart Search

Using Wavesys Smart Search technology, the NVR is able to detect people activities using image functions such as Picture grid, Time search, and Event and retrieve the relevant video.



Key features of WVMS



WVMS Professional – Monitoring Console



WVMS Enterprise – Wall & Redundancy



WVMS Facial Recognition Module



WVMS Video Content Analytics



WVMS License Plate Recognition



WVMS Mobile Application

Specification

Video Input

Model Number IP-01R-MNVR2B1U-32CH

IP Camera Input 16 Channel

Incoming Bandwidth 160 Mbps

Outgoing Bandwidth 80 Mbps

Video Output

HDMI 1 Output 1920×1080, 1440×900, 1280×1024

VGA Output 1920 × 1080, 1280 × 1024, 1024 × 768

Decoding Capacity 1ch 8MP, 4ch 1080P, 9ch D1, 16ch D1, 32ch CIF@30fps

Dual Stream Support

Multi-screen Display 1/4/8/9/16

Recording

Resolution 8MP, 6MP, 5MP, 4MP, 3MP, 1080P, 720P, D1 etc.

Recording Mode Manual, Schedule (Regular, Continuous), Event

Trigger Events Motion Detection, Video Loss, Alarm in, IVS



AI Recognition	
Face Comparison	Real-time captured and display faces comparison results (registrant (name and ID), stranger, channel, similarity)
Multi-objective	Real-time captured and display vehicle, human body, non-motor vehicle, license plates image, and facescomparison results (registrant, stranger, channel, similarity)
Smart Search	Time, Properties, Pictures
Trigger Events	Buzzer, Alarm push, Alarm prompt, Email, Alarm Out, Compare the result simultaneously, etc.
Playback and Backup	
Sync Playback	16/9/4/1
Search Mode	Time /Date, Alarm, Picture grid, Event
Backup Mode	USB Device, Network
Alarm	
General Alarm	Motion Detection, Video Loss, IVS, Alarm in, Alarm out
Intelligent Analysis (By Camera)	Smoking Detection, Smoke and Fire Detection, Fire Spot Detection, Intrusion, Single Line Crossing, Double Line Crossing, Loitering, Wrong-way, Illegal Parking, People Counting, Smart motion detection, Enter Area, Leave Area, etc.
Abnormal Alarm	Disk Alarm, IP Address Conflict, Network Disconnect
Intrusion Detection (By NVR)	4-ch, support the accurate detection of human and vehicle
Network	
Network Function	HTTP, HTTPS, TCP/IP, IPv4, UPnP, UDP, RTSP, SMTP, NTP, DNS, DHCP, P2P, IP Filter, DDNS, 802.1X, SNMP, 3G/4G, PPPoE
Remote Users	8 users
P2P	Support
Interoperability	ONVIF, SDK, CGI



Interface

HDD Interface	2 SATA Ports, up to 8TB for each disk
Network Interface	1× RJ-45, 10/100/1000 Mbps self-adaptive Ethernet port
HDMI	1
VGA	1
Alarm In/Out	1/1
Alarm In/Out	8/2
USB Interface	Front panel: 2 × USB 2.0, Rear panel: 2 × USB 3.0

General

Power Supply	100 to 240VAC
Power Consumption	< 15 W (without HDD)
Operating Conditions	-10 °C to 50 °C (14 °F to 122 °F)
Storage Conditions	Less than 90% RH
Certifications	CE/FCC. BIS
Dimensions	372 × 310.5 × 46.5 mm (16.65 × 12.2 × 2.2 inch)
Net Weight	1.8 kg (3.97 lb) without HDD

Dimensions

